

BOAT HOUSE BULLETIN®



A Factual Report from Mercury Marine

TEST CONDITIONS

Test Date	9/18/2019
Test Conductor	LSingleton, PTrapp
Test Location	Lake Lanier Islands, GA, USA
Air Temperature (degrees F)	91
Elevation (ft)	1071.0
Sea State (calm / smooth / slight / moderate)	Slight
Wind Velocity range (mph)	7.0
Fresh/Salt Water	Fresh water
Boat Weight as Tested (lbs)	4805.0
Fuel Level at Testing (gal)	30.0

English
Units

ENGINE SPECIFICATIONS

Number of Engines	1
Engine	6.2L 370 EC MIE
Horsepower	370 (SN 2A587461)
Cylinders	8
Drive or gear model and ratio	46 IV Transmission; 1.46:1
Hole	n/a
Height	n/a
Setback	n/a
Length (inches)	n/a

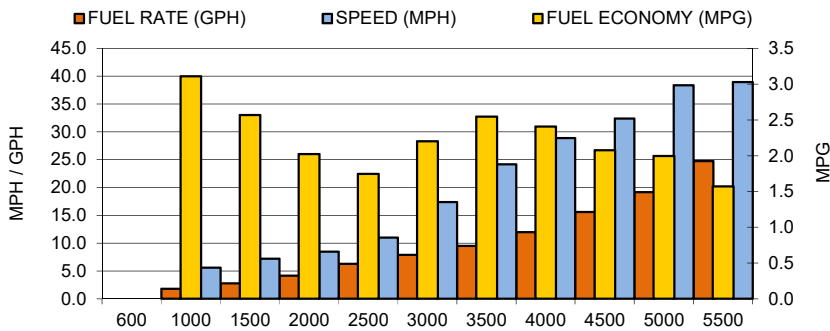
PERFORMANCE SUMMARY

Top Speed (mph @ rpm)	39.0	5,500
Acceleration 0 - 20 mph (seconds)	3.70	
Acceleration 0 - 30 mph (seconds)	5.73	
Best Fuel Econ Off Idle (mpg @ rpm)	3.1	1000

PROPELLER SPECIFICATIONS

Mercury Name / Part Number	OJ WakePro V-3 / 985
Material	Ni-Bral (Nickel, Bronze, Aluminum)
Diameter/Pitch	15 / 12.5
Number of Blades	4
Hub Type	n/a

PERFORMANCE CURVE



PERFORMANCE DATA

RPM	SPEED (MPH)	FUEL RATE (GPH)	FUEL ECONOMY (MPG)	RANGE (MI)
600				
1000	5.6	1.8	3.1	186.7
1500	7.2	2.8	2.6	154.3
2000	8.5	4.2	2.0	121.4
2500	11.0	6.3	1.7	104.8
3000	17.4	7.9	2.2	132.2
3500	24.2	9.5	2.5	152.8
4000	28.9	12.0	2.4	144.5
4500	32.4	15.6	2.1	124.6
5000	38.4	19.2	2.0	120.0
5500	39.0	24.8	1.6	94.4
6000				

BOAT SPECIFICATIONS

Region/s sold	International
Manufacturer	Heyday
Website	https://heydaywakeboats.com/models/wt-surf/
Boat Model	WT Surf
Boat Type	Watersports/Tow Sports
HIN Tested (if available)	US-WTXX1055G819
Material	Fiberglass
Length (ft)	25.1
Beam (ft)	8.0
Max hp Capacity	370
Fuel Tank Capacity (g)	60.0
Steering Type	Cable
Dry Boat Weight (lb)	4300.0

